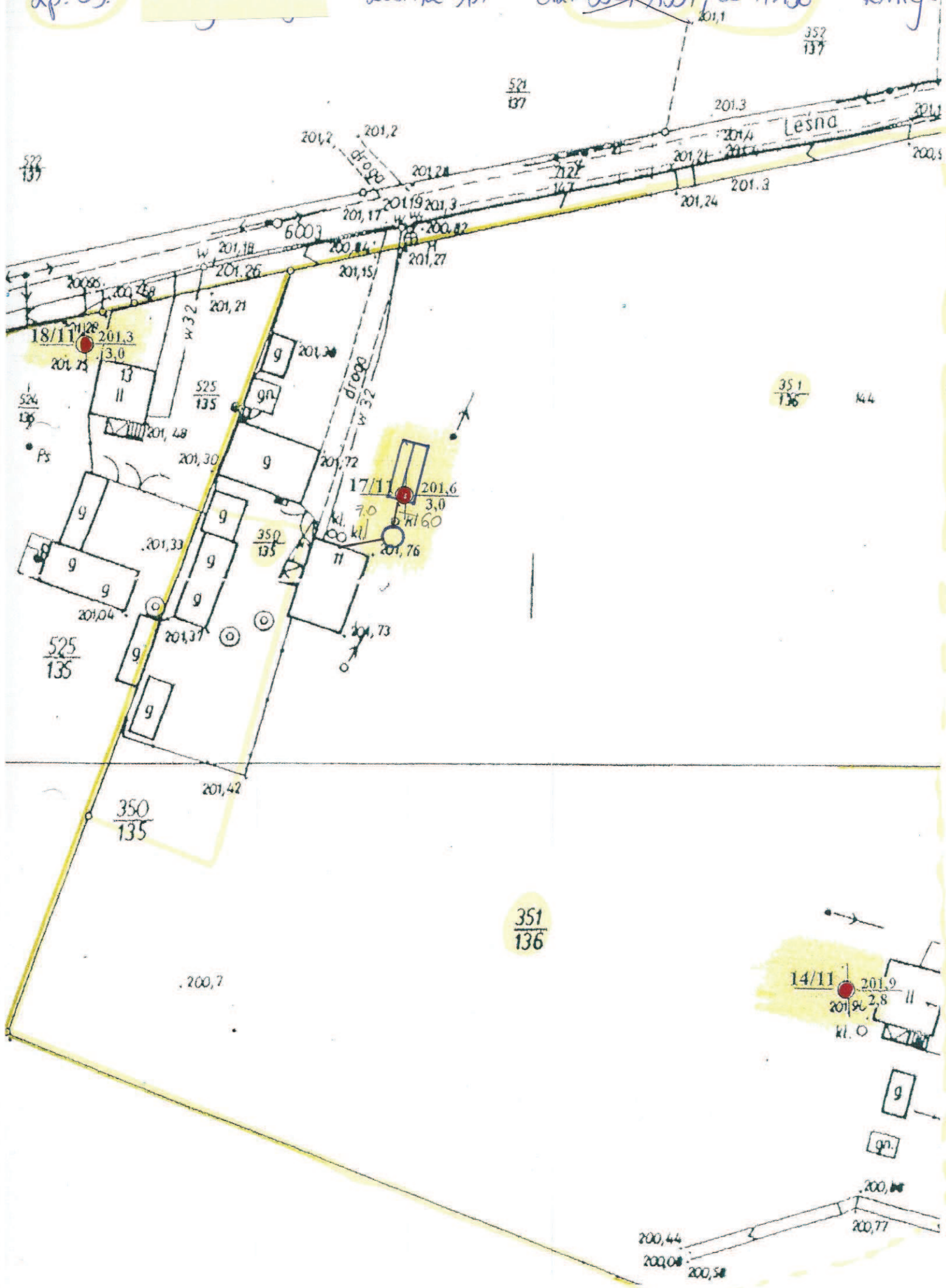




lp. 39.

- Leśna 11 - ob. ~~350/135~~ 351/136 - Knieja

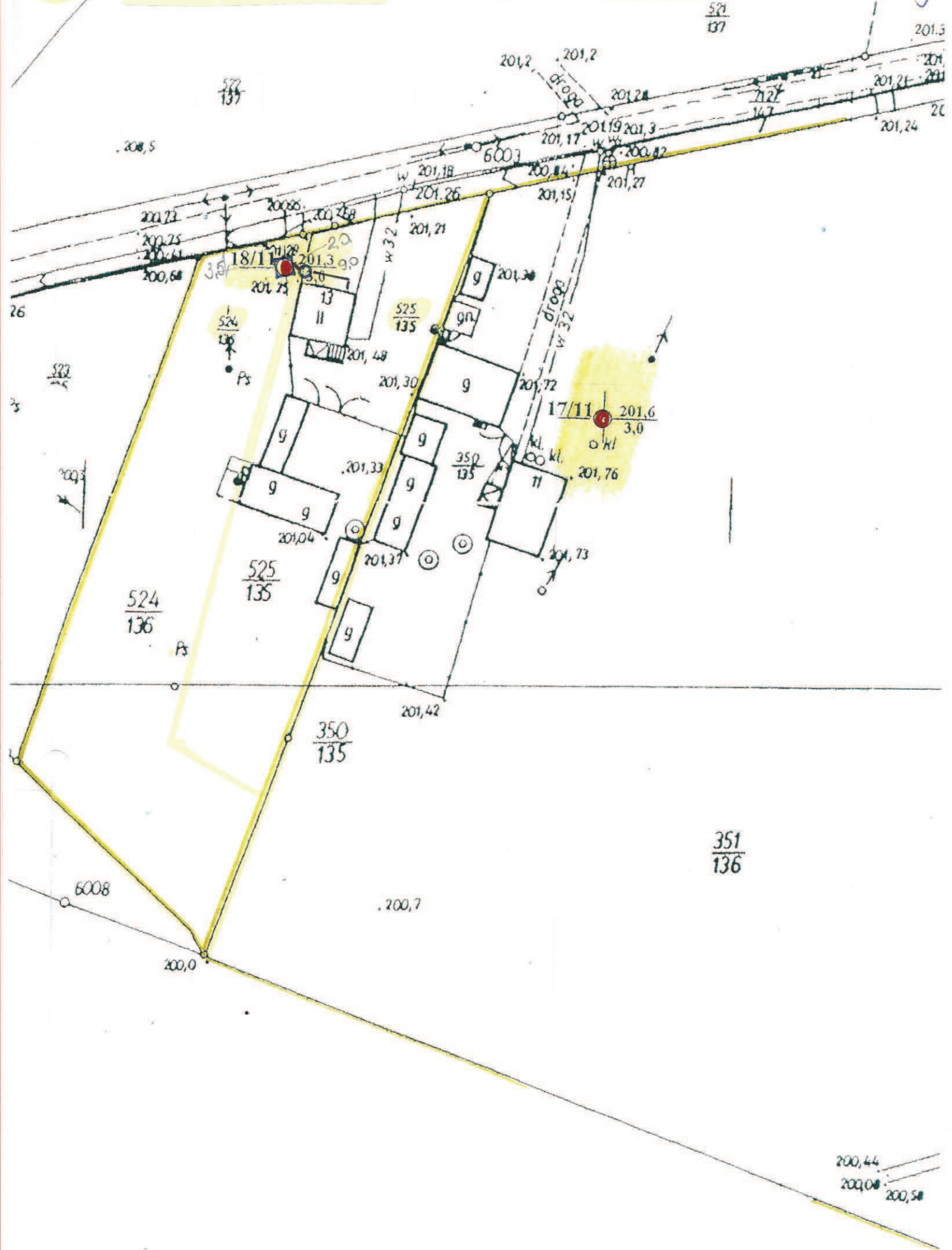




lp. 40

- Lesna 13 - dz. 525/135, 524/136 - kniga

$\frac{521}{137}$



$\frac{351}{136}$

200,44  
200,08  
200,58



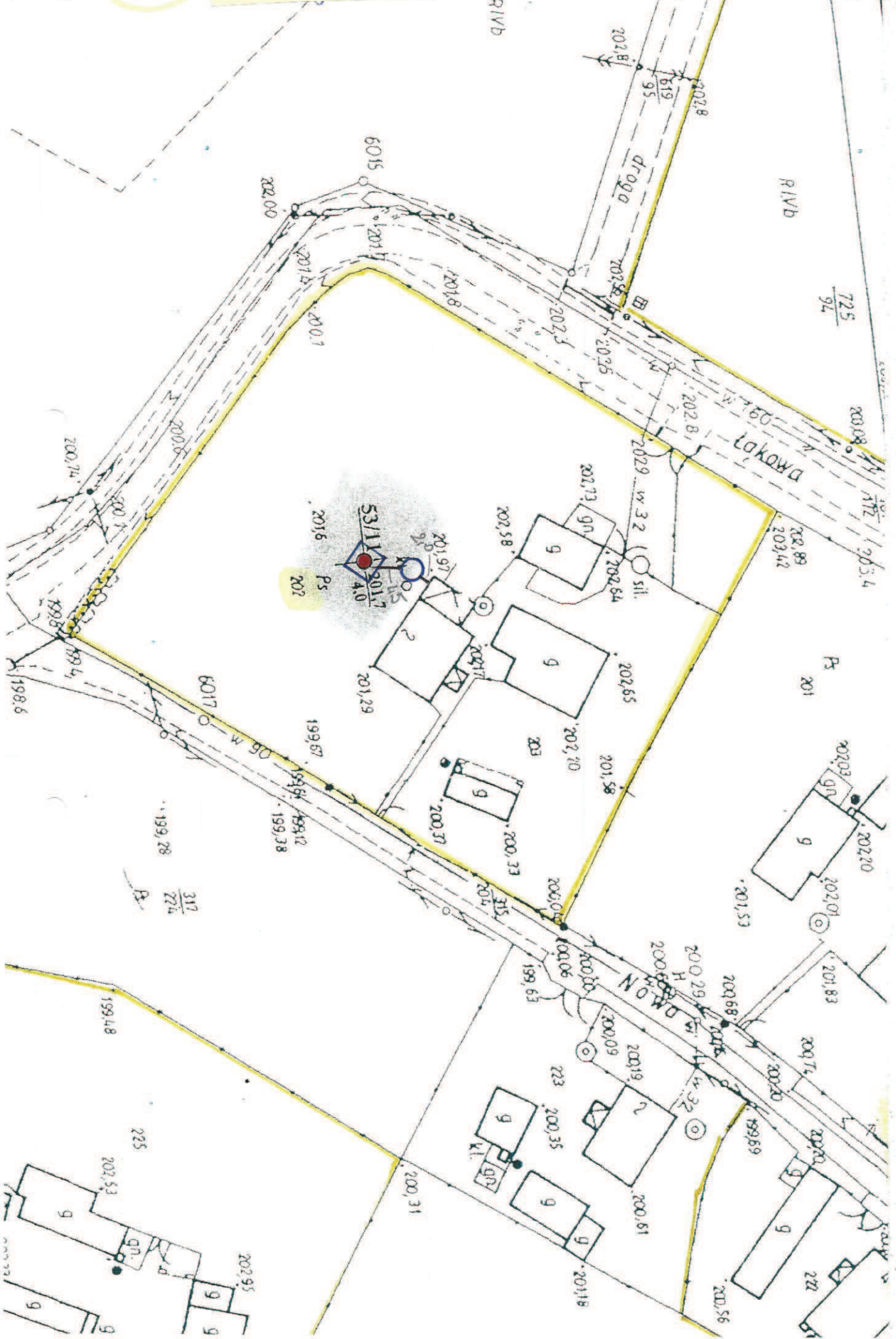




- Łekawa 2 - dz. 202 - Kmieja

Lp. 13

38





Lp. 44. -



- Łekawa 3 - dz. 661/94, 723/94 - Kmieja



