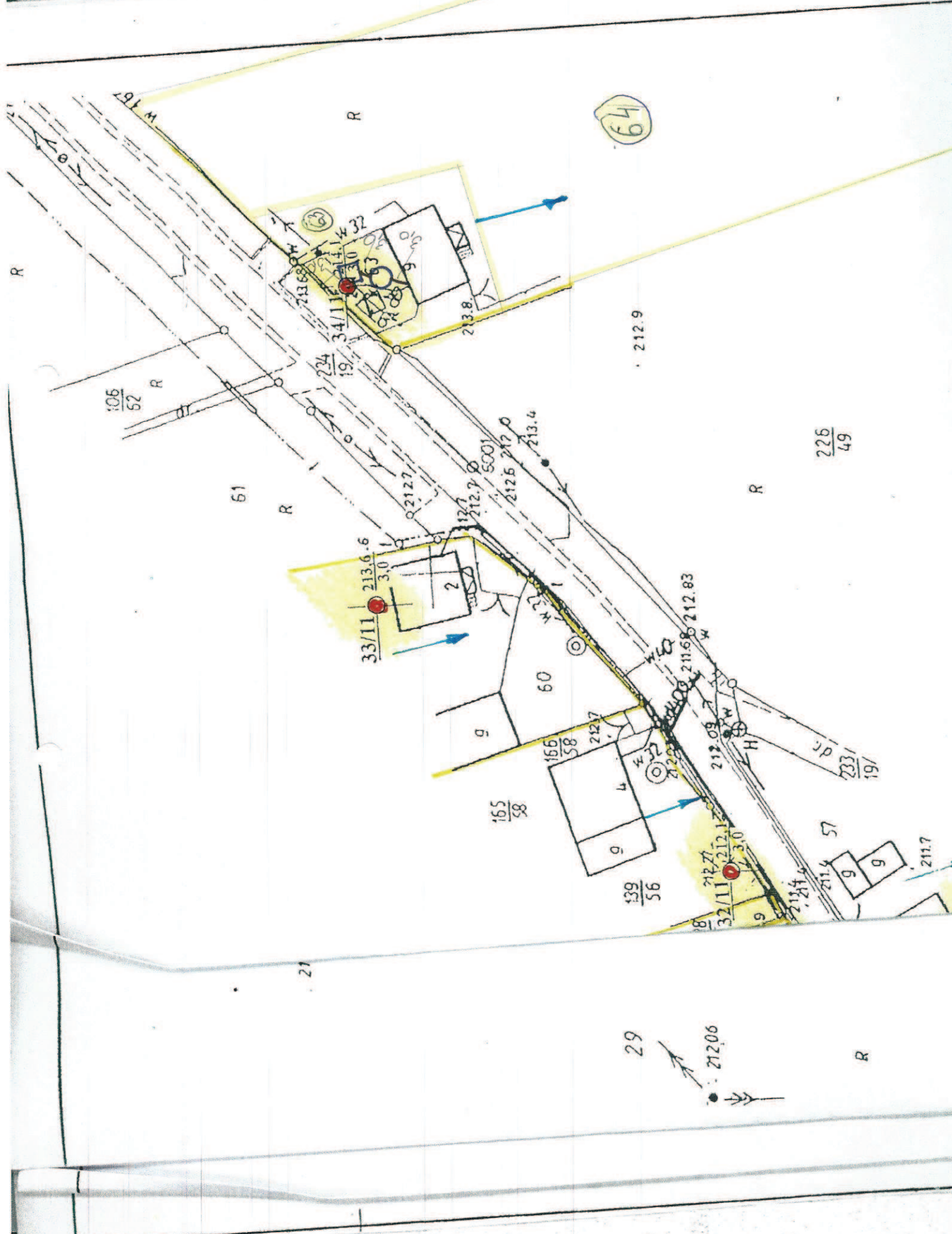


Lp. 82.

Łeka 9 - dz. 63, 64



64

$\frac{106}{52}$ R

61 R

$\frac{33}{11}$ 213.6.6
3.0

$\frac{165}{58}$ 2127

$\frac{139}{56}$ 2127
212.1
3.0

$\frac{226}{49}$ R

$\frac{233}{19}$ 211.4
57

212.9

211.68
212.83

29 21206

211.7

R

Sp. 83.

Leka M - da. 57

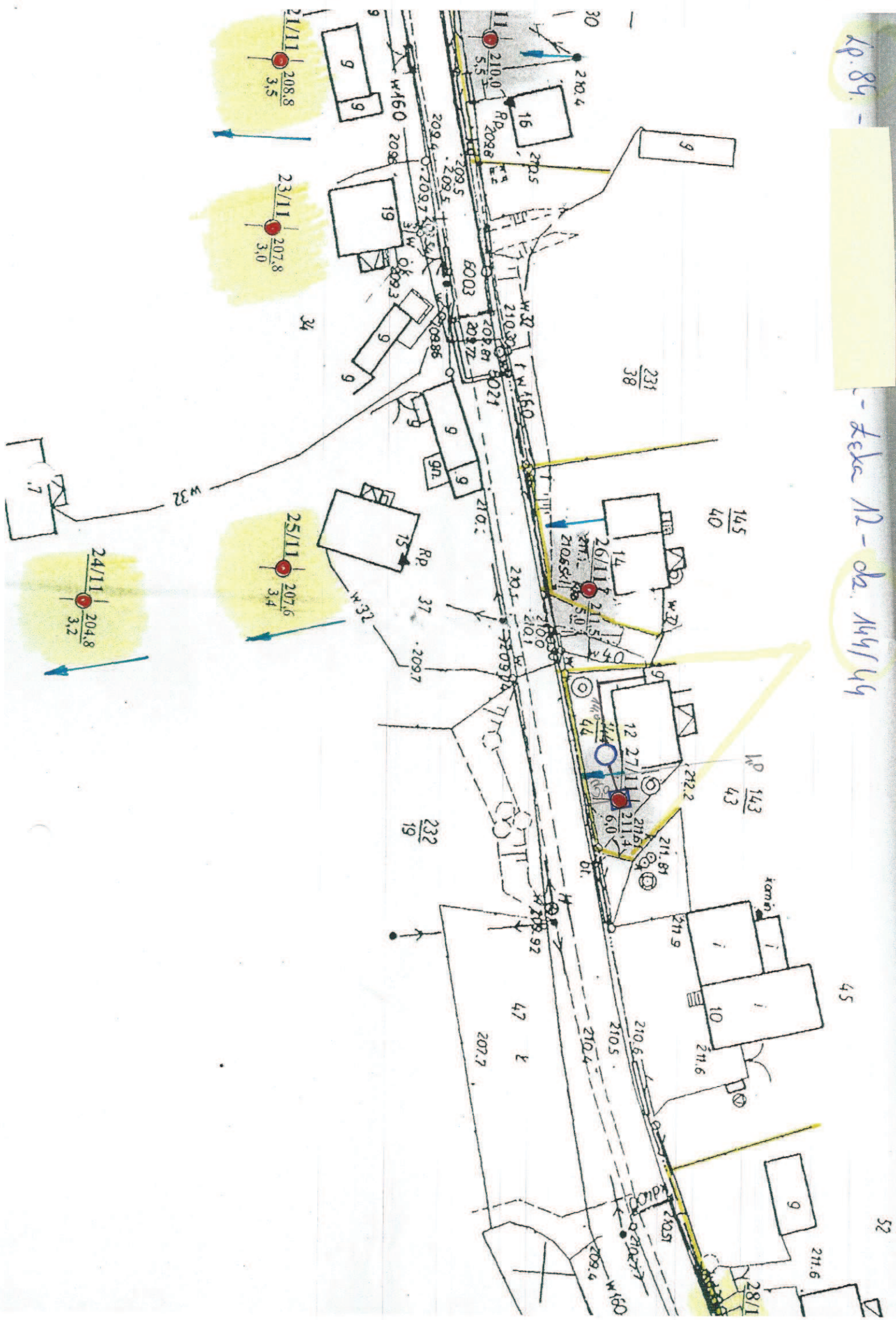


226 / 49

61

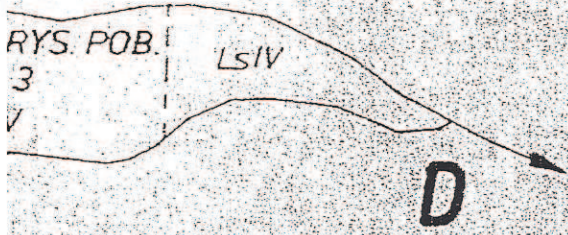
Kp. 84 -

- Desa N2 - da. 144/44



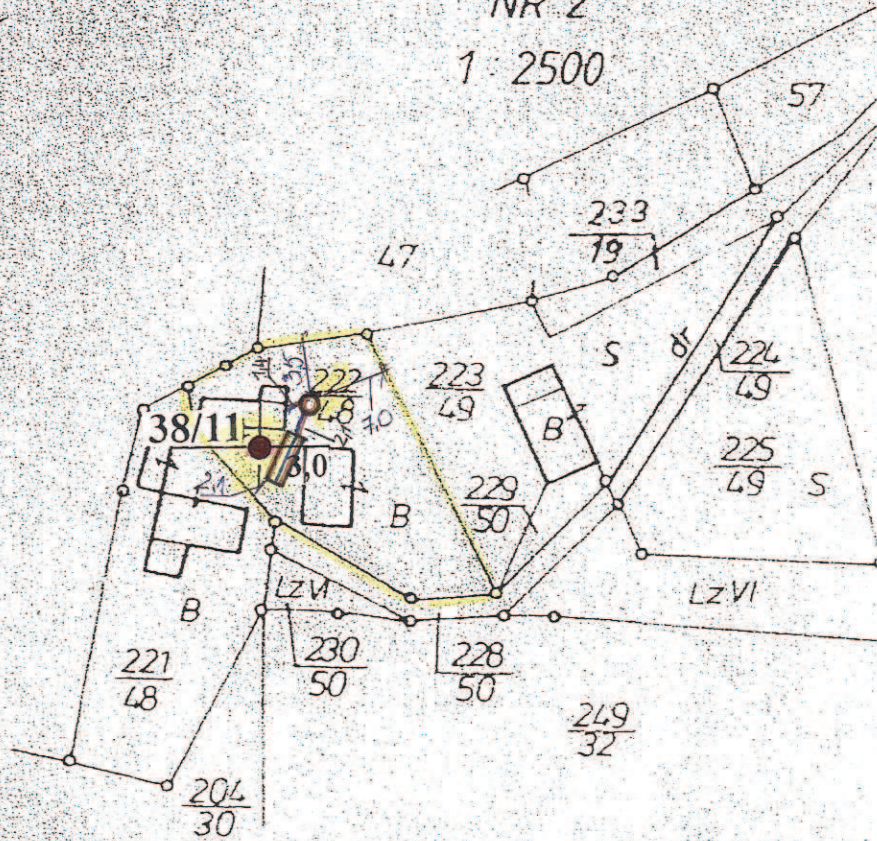
L.p. 85

złota 13, dn. nr 222/48



RYS. POBOCZNY
NR. 2

1:2500



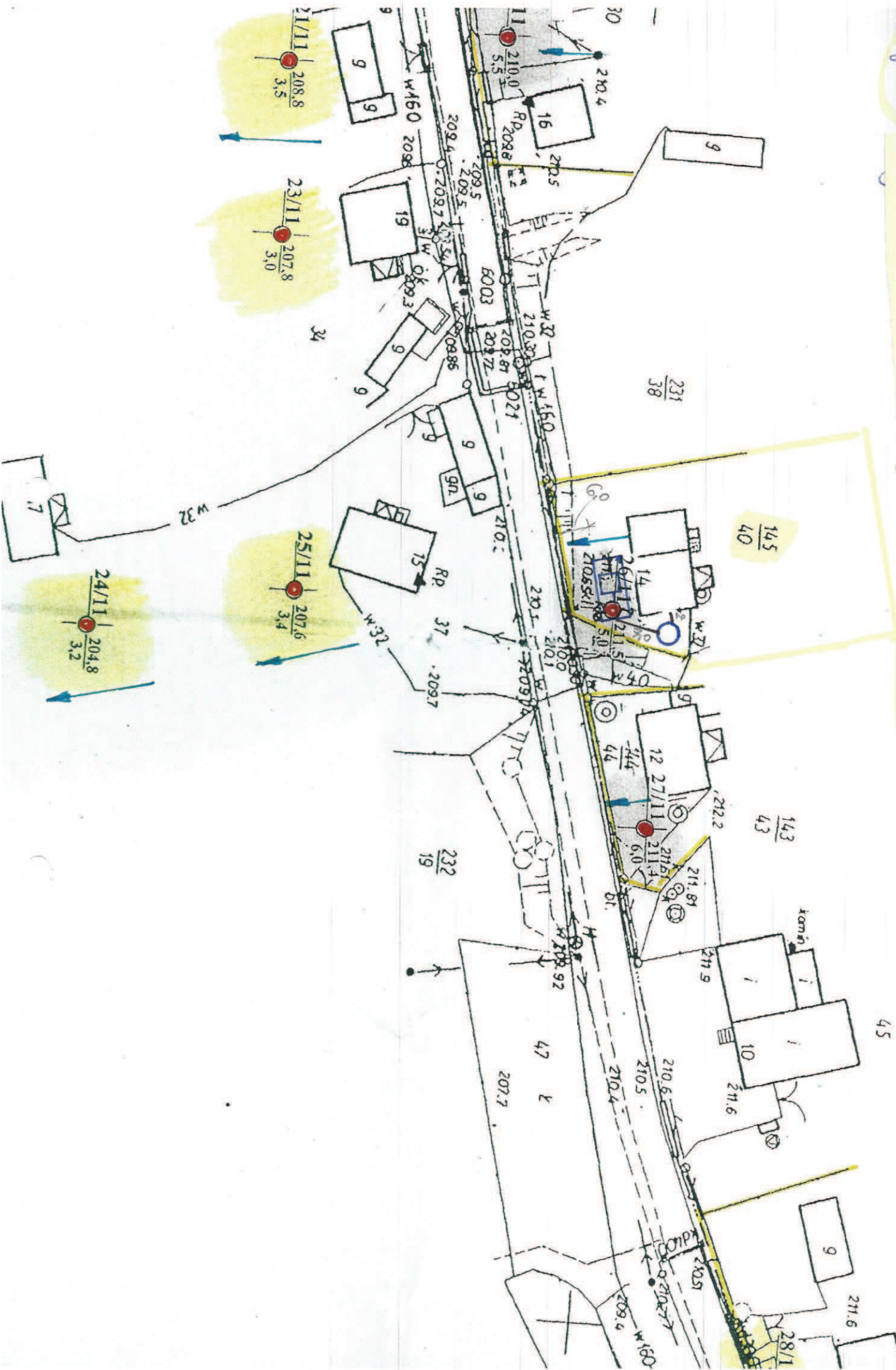
Wojewódzkie Biuro Geodezji i Terenów Rolnych
w Opolu

Kreslarz

30.02.1981
D. Protasiewicz

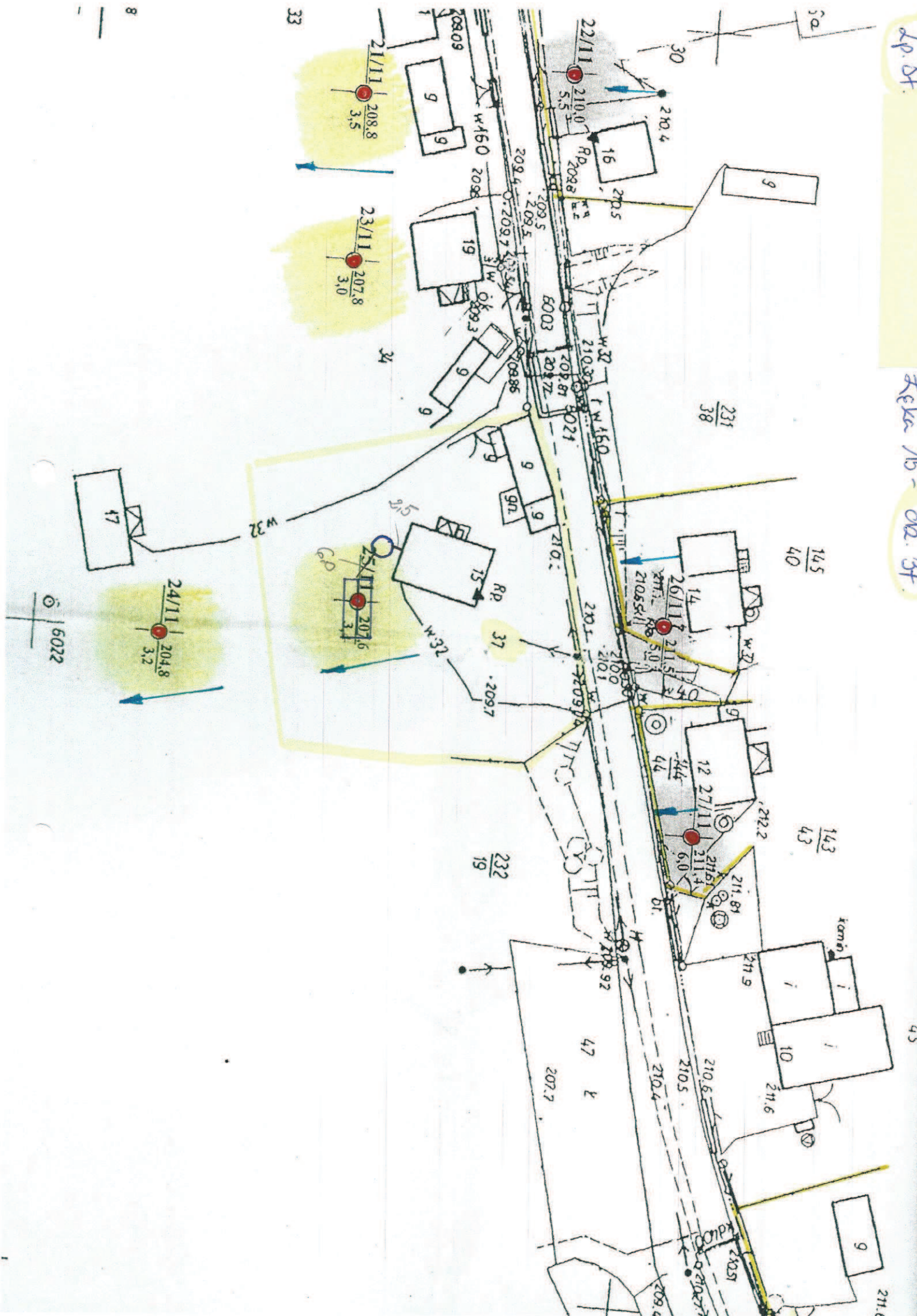
4p 86

feka M - da. 145/140



dp. 87

felka 15 - oba 87



8

33

30

145 / 40

143 / 43

232 / 19

45

6022

211.6